



Canterbury
Christ Church
University



Manchester
Metropolitan
University



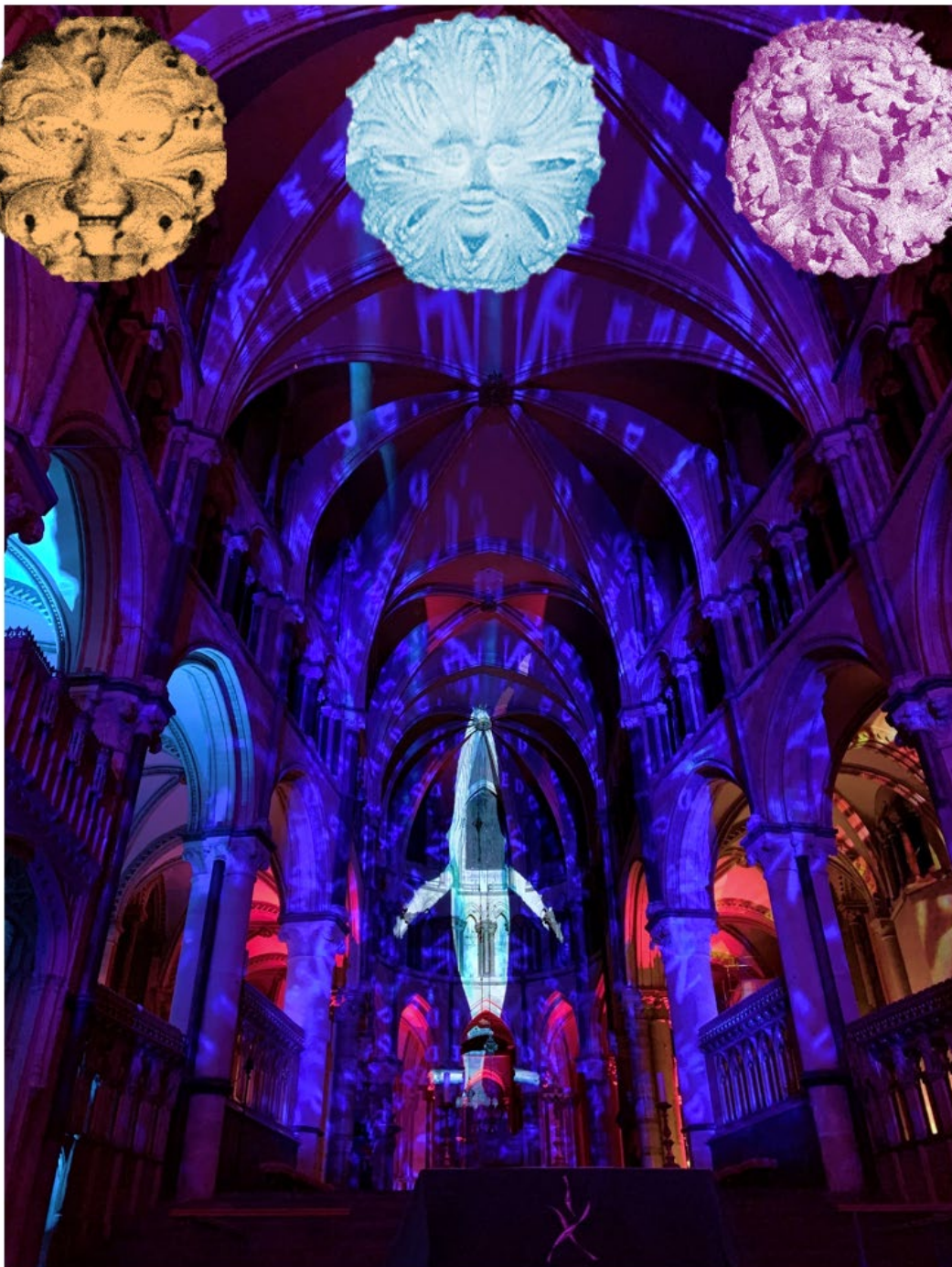
EUROPEAN SCHOOL
OF SUSTAINABILITY SCIENCE AND RESEARCH



Hochschule für Angewandte
Wissenschaften Hamburg
Hamburg University of Applied Sciences

Symposium "Sustainability and Spirituality: Building Ecologies of Hope"

Canterbury Christ Church University
Thursday 11th and Friday 12th of September 2025



Symposium "Sustainability and Spirituality: Building Ecologies of Hope"



Canterbury Christ Church University
Thursday 11th and Friday 12th of September 2025

/// BACKGROUND

The environmental crisis is often seen as a reflection of a deeper spiritual crisis—one of disconnection from nature, consumerism, and loss of purpose. In many societies, economic growth has been pursued at the expense of environmental degradation. A spiritual lens offers alternative narratives of prosperity—ones based on harmony with nature, simplicity, and sufficiency rather than consumption and extraction. Much may be gained by creating a space where practical solutions for environmental sustainability are informed by the deep, transformative power of spiritual and ethical teachings.

The Symposium "Sustainability and Spirituality: Building Ecologies of Hope" is aimed at exploring the profound interconnections between environmental sustainability and spiritual dimensions. This Symposium seeks to create a platform for interdisciplinary dialogue, fostering a deeper understanding of how spiritual and ethical values can inform and drive sustainable practices, ultimately building communities rooted in hope and resilience.

The topics discussed in the symposium aim to foster a rich dialogue that bridges the gap between spiritual values and sustainable practices, inspiring participants to build ecologies of hope.

/// AIMS

The objectives of the symposium are:

- to promote the importance of the topic of sustainability and spirituality in research and study programmes
- to discuss the interconnections between environmental sustainability and spiritual well-being
- to provide a platform for universities to share successful initiatives in respect of research and teaching in these areas, and promote good practice
- to encourage partnerships between universities, industry experts, and government bodies working in this field

The event also aims to motivate universities to implement new, effective teaching and research initiatives which may foster a better awareness among students of the many opportunities offered by the inclusion of a spiritual dimension in university programmes. To document and disseminate the wealth of responses to the proposed theme, the Symposium will produce the book 'Sustainability and Spirituality: Building Ecologies of Hope'. Accepted papers will be published in a major book, with Springer Nature, as

part of the [World Sustainability Series](#), the leading peer-reviewed book series on sustainable development issues.



/// TARGET AUDIENCE

The event will interest experts from diverse fields such as environmental science, theology, philosophy, sociology, humanities and economics, who are looking to explore the intersection of sustainability and spirituality.

/// STRUCTURE OF THE EVENT

The Symposium will be organised around two main strands:

The Symposium will be organised around three strands:

Strand 1: workshops

Participants will be offered the opportunity to experience four workshops (120min), divided into two sessions.

Strand 2: posters

Posters will be displayed during the lunchtime breaks

Strand 3: presentations

There will be four sets of three 30 minutes presentations, divided into two parallel sessions. These are grouped into five themes:

Theme 1: Indigenous and Traditional Spirituality and Decolonisation.

Theme 2: Philosophy, Ethics and Ecology

Theme 3: Mind, body and spirit

Theme 4: Education context

Theme 5: Christian faith

/// SCHEDULE

The Symposium in Canterbury, England, will be held from Thursday the 11th of September 9.00 to Friday the 12th of September 2025 17.30. The schedule is as follows:

Thursday, 11th of September 2025

09.00-10.00- Arrival and Registration (refreshments available)

10.00-12.00- Workshops 1,2

12.00-13.00- Lunch

13.00-13.15- Opening by CCCU Vice-Chancellor Prof Rama Thirunamachandran

13.15-13.45- Welcome address by Rev Dr Jeremy Law, Dean of Chapel, CCCU

13.45-14.30- Keynote by Canon Dr. Ruth Valerio, Embrace the Middle East

14.30-16.00- Presentations and Discussions

16.00-16.30- Break (refreshments available)
16.30-18.00- Presentations and Discussions
18.00-19.15- 'Holly Ale' Taster session
19.15-20.00- Sustainability Candlelight Pilgrimage
to Canterbury Cathedral Procession



Friday, 12th of September 2025

09:00-09:10- Summary of the first day by Prof Walter Leal Filho
09:10-10.00- Workshop by Emma Slade (Ani Pema Deki), Buddhist Nun and Inspirational Teacher
10.00-10.30- Plenary presentation by Johannes Luetz, Alphacrucis University College, Australia
10.30-12.00- Presentations and discussions (refreshments available)
12.00-12.30- Wilder Campus Walk
12.30-13.30- Lunch and Posters' display
13.30-15.00- Presentations and discussions
14.50-15.00- Short Break- refreshments and cakes
15.00-15.30- Closing session, by Prof Walter Leal Filho and by Prof Obas Ebohon, Dean of the Academy for Sustainable Futures, CCCU
15.30-17.30- Workshops 3,4

/// DEADLINES

Deadline for submission of abstracts: 31th May 2025
Deadline for full, revised papers: 30th September 2025
Deadline for registrations: 11th September 2025

/// FEES AND CHARGES

The registration fee is £170 or €190. This offsets some of the preparation costs and book production. It includes the coffee breaks and lunches on the two days. We'll send invoices to the registered delegates, using the information provided during registration.

/// REGISTRATION

Registrations to the Symposium are now open and we look forward to meeting you in September. As well as offering a formal academic programme, which will be very stimulating and foster discussion, we aim to create opportunities for conversations and a safe space for the exchange of ideas and for self-reflection. We have received a rich variety of abstracts exploring sustainability and spirituality connections from insightful and very diverse angles, from authors across the globe.

Please contact Dr Jivanka Mohan mxtjivee@gmail.com to confirm your wish to register for the Symposium to attend in person.

/// ORGANISERS

- [The UK Consortium on Sustainability Research \(UK-CSR\)](#)
- [Canterbury Christ Church University](#) – event host



In cooperation with:

- [the European School of Sustainability Science and Research \(ESSSR\)](#)
- [the Inter-University Sustainable Development Research Programme \(IUSDRP\)](#)
- [the European North American Sustainability Research Consortium \(ENASRC\)](#), and more

/// SCIENTIFIC COMMITTEE

Chairpersons and Organising Committee

- Prof Walter Leal, Manchester Met and Hamburg University of Applied Sciences
- Dr Adriana Consorte-McCrea, Academy for Sustainable Futures, Canterbury Christ Church University
- Revd Jeremy Law, Dean of Chapel, Canterbury Christ Church University
- Dr Ivan Khovacs, Senior Lecturer, School of Humanities and Educational Studies, Canterbury Christ Church University
- Dr Maria Diemling, Reader in Jewish-Christian Relations, School of Humanities and Educational Studies, Canterbury Christ Church University
- Dr Dennis Nigbur, Senior Lecturer in Psychology, Canterbury Christ Church University

/// CONTACT POINT FOR SCIENTIFIC INPUTS, STRATEGIC COOPERATION AND GUIDANCE ON PUBLICATION

Please send questions about scientific inputs, publication, and strategic partnerships to:

Professor Walter Leal (BSc, PhD, DSc, DPhil, DEd, DLitt, FSB, FRGS, FLS), UK-CSR
E-mail: w.leal@mmu.ac.uk

And to

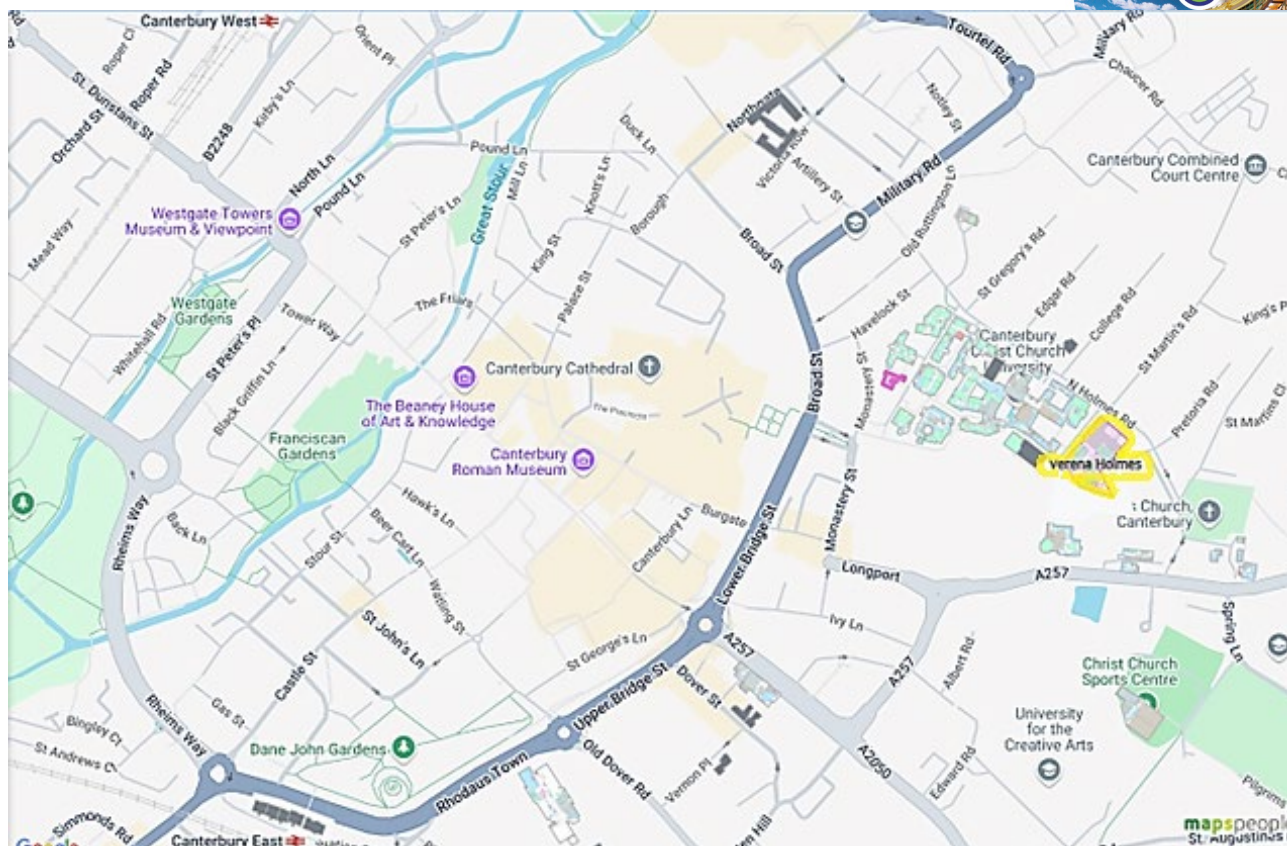
Dr Adriana Consorte-McCrea, Academy for Sustainable Futures, Canterbury Christ Church University
E-mail: adriana.consorte-mccrea@canterbury.ac.uk

/// CONFERENCE CONTACT POINT FOR FURTHER DETAILS

All questions related to registrations should be sent to:

Dr Jivanka Mohan mxtjivee@gmail.com

/// THE VENUE



Canterbury Christ Church University, North Holmes Road campus, Verena Holmes building, Longport, Canterbury CT1 1PH, Kent, UK.

[CCCU campus interactive map](#)

/// TRAVEL AND ACCOMMODATION

Getting to Verena Holmes

[Canterbury Campus maps and directions - Canterbury Christ Church University](#)

Cycling

Secure, free of charge bike racks available on campus.

Train and Walking

Verena Holmes is equidistant from Canterbury East and from Canterbury West Train Stations (10 minutes' walk) and close to the Heritage Sites.

[Train timetables and fares](#)

Car

There is no parking available on site, however visitors may use [local car parks](#) or the [local park-and-ride](#)

Nearest car parks to the venue: [Longport carpark](#), [Holman's Meadow carpark](#), [Queningate carpark](#)



There is a wide selection of hotels in Canterbury to choose from.
The ones closest to the University are:

Premier Inn	8 min walk (0.4 mile)
Travelodge Canterbury Chaucer	9 min walk (0.5 mile)
Canterbury Cathedral Lodge	13 min walk (0.7 mile)
Ebury Hotel and apartments	13 min walk (0.6 mile)
Abode Canterbury	15 min walk (0.8 mile)
Hampton by Hilton	15 min walk (0.8 mile)
Pilgrims Hotel	16 min walk (0.8 mile)
The Falstaff	20 mins walk (1 mile)

There is a good range of places to stay and you can find more information here:
[Visit Canterbury - Visit Canterbury](#)

/// TO VISIT

Canterbury Cathedral, St Augustine's Abbey, and St Martin's Church: a visit to Canterbury's [UNESCO World Heritage Site](#)

We recommend that delegates find time before or after the Symposium events to walk Queen Bertha's Way...

Videos here: [Canterbury Cathedral, St Augustine's Abbey, and St Martin's Church - Videos - UNESCO World Heritage Centre](#)

[Home | Canterbury Cathedral](#) Open Monday to Saturday 10.00 - 17.00 (last admission at 16.00), Canterbury, CT1 2EH

[St Augustine's Abbey | English Heritage](#): Open daily, 10am - 5pm, Longport, Canterbury, Kent, CT1 1PF.

[Canterbury St Martin | National Churches Trust](#) Open Wednesday to Sunday from 11am to 3pm (with the exception of Thursdays from 12noon to 12.30pm for services; visitors are most welcome to to join). North Holmes Road, Canterbury, Kent, CT1 1QJ.

Symposium "Sustainability and Spirituality: Building Ecologies of Hope"



Canterbury Christ Church University
Thursday 11th and Friday 12th of September 2025
Programme

Day 1-11th September 2025:

9.00-10.00 (VH.1.07)- Arrival and Registration (refreshments available)

10.00-12.00-Workshops

<p>1. (VH.2.59) Secular Leadership and Spiritual Responsibility, by Terry Cooke-Davies</p> <p>This interactive session explores the responsibilities of secular leaders—whether in business, governance, education, or civil society—in cultivating sustainable, life-affirming futures.</p>	<p>2. (VH.2.60) Kissing the Earth – Poetry and Pilgrimage, by Victoria Field</p> <p>This workshop invites you to engage with poetry and pilgrimage.</p>
---	--

12.00-13.00- Lunch

13.00-13.15 (VH.1.07) - Opening by CCCU Vice-Chancellor and Principal Prof Rama Thirunamachandran

13.15-13.45 (VH.1.07)- Welcome address by Rev Dr Jeremy Law, Dean of Chapel, CCCU: 'Towards an Evolutionary Spirituality'

13.45-14.30 (VH.1.07) - Keynote by Canon Dr. Ruth Valerio, Embrace the Middle East: 'Faith-filled and Faithful: the role of spirituality with sustainability'

14.30-15.00- Coffee break

15.00-16.30- Parallel sessions

(VH.2.59) Chair Johannes Luetz	(VH.2.60) Chair Maria Diemling
I Indigenous and Traditional Spirituality and Decolonisation	II Philosophy, Ethics and Ecology
15.00-15.30 Indigenous right to bio(secure) the land in Aotearoa, New Zealand- Andrea Milovan	15.00-15.30 Adventuring Towards Geosophy and Geopietry: On Being and Becoming an 'Earth Charter'- Alun David Morgan, University of Plymouth, UK
15.30-16.00	15.30-16.00



Indigenous Spirituality and Sustainability Education: The Guji Oromo Cosmological Paradigm and Practices- Elfneh Bariso, CCCU, UK	Bridging Ethics and the Environment: Exploring the Spiritual Foundations of Sustainable Development in a Small Island Developing State- Lesvie Archer, University of Bahamas
16.00-16.30 Rastafari Spiritual Ecology: Decolonization through Regenerative Agriculture, Environmental Restoration and Holistic Healing- Anna Waldstein, University of Kent, UK	16.00-16.30 Baroona Farm Ministry- The Reverend Samuel Dow, Anglican Church Southern Queensland, AU

16.30-18.00 Parallel sessions

(VH.2.59) Chair Dennis Nigbur	(VH.2.60) Chair Adriana Consorte-McCrea
I Mind, body and spirit	II Philosophy, Ethics and Ecology – Chair
16.30-17.00 Earth and Spirit: Using Clay to Cultivate Pro-Environmental Spirituality in Worship and Practice- The Very Rev. Michael W. DeLashmutter, PhD, USA	16.30-17.00 The Living Universe- Rachael A Vaughan, California Institute of Integral Studies, USA
17.00-17.30 Process Theopoetics: Understanding God to Understand the Earth- Ruby Beall, Bishop Grosseteste University, UK	17.00-17.30 An Ecological Vocation: Simplicity, Spirituality, and Sustainability- Aven Lumi Whitehorse, CIIS; Viridis Graduate Institute, USA
17.30-18.00 Attuning our Embodied Selves to the Natural World- Marianne Adams, Appalachian State University, USA	17.30-18.00 Spirituality in environmental sustainability research - A scoping review- Praveena Rajkoba, University of Western Sydney

18.00-19.15- 'Holy Ale' taster session

19.15-20.00-Sustainability Candlelight Pilgrimage to Canterbury Cathedral Procession organised by Revd Canon Dr Emma Pennington – meeting at CCCU Chapel

Free evening

Day 2- 12th September 2025:

09:00-09:10 (VH.1.07)- Summary of the first day by Prof Walter Leal Filho

09:10-10.00 (VH.1.07)- Workshop by Emma Slade (Ani Pema Deki):

'The Earth has Music for Those Who Listen - Insights from a Buddhist meditator'

10.00-10.30 (VH.1.07)- Plenary presentation by Johannes Luetz, Alphacrucis University College, Australia: 'The epistemological and spiritual implications of species extinction'

10.30-12.00 Parallel sessions (refreshments available)

(VH.1.29) Chair Elfneh Bariso	(VH.2.60) Chair Ivan Khovacs
I Indigenous and Traditional Spirituality and Decolonisation	II Education context
10.30-11.00 Ecological Sufferings: From a Haitian Christian and voodoo perspectives- Roldano Auguste, UnepH, Haiti	10.30-11.00 How might school communities find spiritual strength to combat the environmental challenge? What roles might religious education and spiritual development play?- Bob Bowie, CCCU, UK
11.00-11.30 Experiences with classic psychedelics are associated with greater spiritual wellbeing and nature connectedness- Kevin Rozario, Leipzig University, Germany	11.00-11.30 Sustainability and Spirituality through Higher Education for Women: A Case Study- Vanitha Williams, Women's Christian College, Chennai
11.30-12.00 Integrating Pasifika Indigenous Knowledge of Spirituality for Sustainable Living- John Steward Hinge	11.30-12.00 Promoting Sustainability Practices on University campuses through the Inclusion of a Spiritual Dimension into Higher Education Programs in Nigeria- Olatunbosun Emmanuel Ogunseemi, Bamidele Olumilua University of Education, Science and Technology, Nigeria.

12.00-12.30- [Wilder Campus Map](#) walk (2 groups)

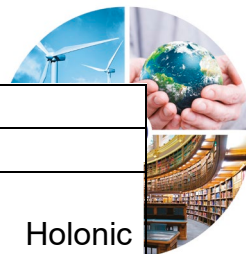
12.30-13.30 Lunch and visit to posters at CCCU Chapel

Poster: Sustainable gardening and eco-spirituality: Identity, connection and a 'sense of place' in a garden- Julie Jones, CCCU, UK

Poster: A local 'Eco-Church' case study: how can an awards programme equip a UK church to care for creation?- Laura Hackett, CCCU

13.30-15.00 Parallel sessions





(VH.1.29) Chair Jeremy Law	(VH.2.60) Chair Bob Bowie
I Christian faith	II Mind, body and spirit
13.30-14.00 Let all creation rejoice: A focus group study connecting Christian faith with environmental sustainability, Dennis Nigbur and Adriana Consorte-McCrea, CCCU, UK	13.30-14.00 Ecologies of the Spirit: A Holonic Perspective on Sustainability and Spirituality- Olimpia Rosales, Tecnológico de Monterrey, Mexico
14.00-14.30 Natural law in view of Natural Systems. Redesigning Christian Environmental Ethical Principles- Antonina Wozna Urbanczak, Austria	14.00-14.30 Enabling Inner Connections: Sustainability, Spirituality & Deep Consciousness- Keith Beasley, University of Bristol, UK
14.30-15.00 Spirituality in sustainability: Anglicanism as an applied theology of pragmatism- Dr. Michael Jackson, Church of Ireland, Ireland	14.30-15.00 Eco Genius Innovative Environmental Solutions- Tawhed Bashar, Sudan

14.50-15.00- Short break

15.00-15.30 (VH.1.07)- Concluding session, by Prof Walter Leal Filho and by Prof Obas Ebohon, Dean of the Academy for Sustainable Futures, CCCU

15.30-17.30- Workshops

<p>3. (VH.1.29) Living to Be Me, Living for Impact: Connecting the Classroom to the Earth, by Priyali Ghosh</p> <p>A two part event: a talk, in which the speaker will share the journey of establishing 'Resilient Globe,' a social enterprise that supports people in healing and transforming what has caused pain into a source of healing and power; a workshop that will use writing, theatre and music to support participants in rebuilding and expanding relationships - with themselves, with other living beings and with the earth. It will draw on collective experiences to create an experimental model for future classrooms.</p>	<p>4. (VH.2.60) Building HOPE through the development of spiritual intelligence, by Orla Kelleher, Chris Moon, Barbara Tomasella</p> <p>The workshop facilitators will use selected examples of art to engage workshop participants in activities to surface feelings (felt-sense) in relation to Oneness with Nature, Mindfulness, and Purpose.</p>
--	---

/// KEYNOTES

Opening address by Revd Dr Jeremy Law, Dean of Chapel, Canterbury Christ Church University:

Title: Towards an Evolutionary Spirituality

We humans have emerged from the earth and belong to the earth. Without the earth we have neither life nor future. Drawing upon the latest findings in human evolution and placing these in dialogue with Christianity the Welcome Address will suggest there is an urgent need to discover a spirituality that overcomes the dangerous myth of human self-sufficiency and independence.



Canon Dr Ruth Valerio
Programmes, Partnerships & Advocacy Director, Embrace the Middle East
<https://ruthvalerio.net/>

Title: Faith-filled and Faithful: the role of spirituality with sustainability



Sustainability and spirituality are categories apart aren't they? One is focused on science, technical theories and practical action, while the other seeks to escape the physical realm and float off into the ether. But what if they aren't so far apart as we might think?

This talk will frame the symposium by looking at the role that spirituality can play in sustaining ecological engagement. We will look at how

faith takes us deeper into the sacredness of the natural world; gives us the habits and virtues needed to act and live well within it, and equips us with the tools to keep going through the many challenges we face and work towards a vision of a flourishing world.

Environmentalism, theologian, social activist and author, Canon Dr Ruth Valerio is Director of Programmes and Advocacy at Embrace the Middle East. Ruth carries a vision to inspire and equip people to a whole-life response to poverty and environmental breakdown, helping build a movement that brings about lasting change for the poorest and most vulnerable. Ruth pioneered the Eco Church programme and longs to see the culture of the Church change so that caring for God's earth becomes an integral part of church life, rather than an optional extra. Ruth has a theology degree from Cambridge and a doctorate from Kings College London, in which she looked at simplicity and consumerism and particularly at the relationship between Thomas Aquinas' virtues of temperance and justice. She also

holds honorary doctorates from the Universities of Winchester and Chichester and is Canon Theologian at Rochester Cathedral. Ruth is a regular media contributor.



Workshop by Emma Slade (Ani Pema Deki)

Fully ordained in Bhutan, teacher, charity founder and ex-investment banker!

Buddhist Nun and Inspirational Teacher

www.emmaslade.com

Title: 'The Earth has Music for Those Who Listen - Insights from a Buddhist meditator'



In 2022 I became the first and only Western woman to date ever to be fully ordained in the Himalayas itself. I have taught yoga for many years and have taught Buddhism and mindfulness to many Western students and have co-run courses alongside Bhutanese monastics. I have assisted in editing and translating prayers and texts from many Bhutanese masters, working alongside translators within Bhutan.

I hope I combine a unique perspective of West and East, worldly and non-worldly in my perspective and teachings.

I will speak on a combination of how spiritual beliefs and practices can foster sustainable behaviour and lifestyles, and on spiritual teachings around simplicity and their implications for sustainable consumption. This will be done from my perspective as a Buddhist nun and from my role as someone who frequently hears the sorrow which comes from being disconnected to a sense of well-being. In addition to developing greater peacefulness and awareness the Buddhist path emphasises two key qualities which need to be developed and which benefit both our own spiritual wellbeing and the wellbeing of the world around us: non-harming and renunciation (the conscious practice of contentment and conscious choice). My session will explore why these qualities are so crucial for our own wellbeing, encouraging participants to consider how 'well-being' differs from 'spiritual well-being', for each and everyone of us.

/// WORKSHOPS:

1. **Secular Leadership and Spiritual Responsibility**, by Terry Cooke-Davies (workshop + talk 120 minutes)
2. **Kissing the Earth – Poetry and Pilgrimage**, by Victoria Field (60-120min)
3. **Living to Be Me, Living for Impact: Connecting the Classroom to the Earth**, by Priyali Ghosh (workshop + talk 120 minutes)
4. **Building HOPE through the development of spiritual intelligence**, by Orla Kelleher, Chris Moon, Barbara Tomasella

Abstracts



1. Workshop: Secular Leadership and Spiritual Responsibility by Terry Cooke-Davies tcd@dtenterprises.co.uk

This interactive session explores the responsibilities of secular leaders—whether in business, governance, education, or civil society—in cultivating sustainable, life-affirming futures. Drawing on the Three Horizons framework and the Principle of Relational Integrity, the workshop invites participants to reflect on their own leadership “niches” and explore the spiritual dimensions of leadership that go beyond traditional religious frameworks. Through dialogue, experiential practices, and practical tools, the session aims to help participants attune their leadership to the deeper rhythms of life and contribute meaningfully to emergent ecologies of hope.

2. Kissing the Earth – Poetry and Pilgrimage, by Dr Victoria Field, Canterbury Christ Church University, victoria.field@canterbury.ac.uk, victoriafield376@gmail.com

Poetry and pilgrimage are practices that foster connection, wonder and intimacy. Both, I believe, encourage imaginative, inclusive ways to regenerate and re-ensoul our wounded world. As a trained poetry therapist working in the community, I have found that engagement with beauty, literature and complexity enables us to approach the fragile parts of our psyches in a way that honours both our common humanity and our individual experiences. When I was writer-in-residence at Truro Cathedral, our creative workshops enabled the spiritually hungry to enter spaces from which, for various reasons, they had felt excluded. Pilgrimage, according to the late Pope Francis, is based on effort, simplicity and silence. My own embodied experience on the Via Francigena from Canterbury to Rome, as well as my doctoral research confirms the power of these qualities. A long walking pilgrimage requires a relinquishing of control and can lead to remarkable transformations. Every step on the path is a way of ‘kissing the earth’ (Thich Nhat Hanh) instead of burning her.

This workshop invites you to engage with poetry and pilgrimage. No previous experience of either is required.

3. Living to Be Me, Living for Impact: Connecting the Classroom to the Earth, by Dr. Priyali Ghosh resilient.globe@gmail.com

What if the solution to the challenges of this time is to shift from the perception of crisis to the perception of opportunity? What if the framework that we presently operate from constantly recurring problems to solve within a limited and linear understanding of space and time, is replaced with the understanding that we are multidimensional beings having a human experience? What if the greatest legacy we can create for the future is to vision and create school and university classrooms, rooted in the understanding of the power and beauty of individual creativity and our connection to the earth?

This abstract proposes a two part event. The first hour will be a talk, in which the speaker will share the journey of establishing ‘Resilient Globe,’ a social enterprise that supports people in healing and transforming what has caused pain into a source of healing and power. The second hour will be a workshop that will use writing, theatre and music to support participants in rebuilding and expanding relationships - with

themselves, with other living beings and with the earth. It will draw on collective experiences to create an experimental model for future classrooms.



Dr. Priyali Ghosh is a graduate of the University of Calcutta and the University of Cambridge. She earned her PhD at the Department of English, Canterbury Christ Church University and has also been an Affiliated Postdoctoral Member of Clare Hall, the University of Cambridge. She has lived and taught in India, the United Kingdom, the Bahamas and Bhutan. She is also a poet, performer and peacebuilder.

4. Building HOPE through the development of spiritual intelligence, by Orla Kelleher, Chris Moon, Barbara Tomasella

An interactive workshop, based on the Sustainability Mindset Principles, using art, symbolism, reflection, and AI.

Orla Kelleher, University of Derby. O.Kelleher@derby.ac.uk

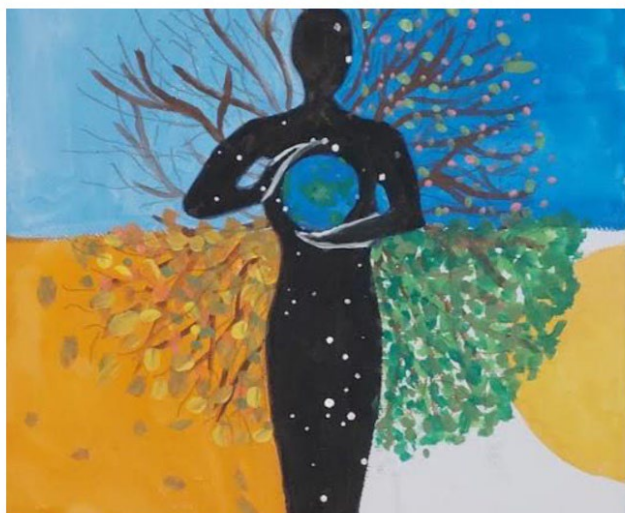
Chris Moon, Middlesex University. c.moon@mdx.ac.uk

Barbara Tomasella, University of Derby. B.Tomasella@derby.ac.uk

Following the success of the Enterprise Educators UK (Wylie et al, 2024) Research Project to develop a toolkit based on The Sustainability Mindset Principles (Rimanoczy, 2020) this workshop will explore the three SMP principles related to Spiritual Intelligence. The workshop facilitators will use selected examples of art to engage workshop participants in activities to surface feelings (felt-sense) in relation to Oneness with Nature, Mindfulness, and Purpose. We will explore participant feelings first by surfacing reactions to the famous painting by the 19th Century artist George Frederic Watts. The image is of a girl named Hope, blindfolded, sat on top of the Earth and attempting to play a one-stringed lyre. Chris Moon will explore the symbolism of this painting in relation to the theme of the conference and relate to his own research on Empathy, Compassion and Connectedness to Nature (Moon, 2021). Orla Kelleher will then demonstrate the use of art and imagery in deep learning strategies, where business students reflect on climate change through the triadic approach of intellect, emotions and values (Rimanoczy, 2021; Hanney, 2018) Examples will be shown of student work to example the interconnections between sustainability, deeper human values, spirituality and cultivating hope in a positive future.



Hope by GF Watts.



Example of student art work.

/// CANTERBURY, A WORLD HERITAGE CITY



Canterbury Cathedral, St Augustine's Abbey, and St Martin's Church

'Canterbury, in Kent, has been the seat of the spiritual head of the Church of England for nearly five centuries. Canterbury's other important monuments are the modest Church of St Martin, the oldest church in England; the ruins of the Abbey of St Augustine, a reminder of the saint's evangelizing role in the Heptarchy from 597; and Christ Church Cathedral, a breathtaking mixture of Romanesque and Perpendicular Gothic, where Archbishop Thomas Becket was murdered in 1170.'

[UNESCO World Heritage Site](#)

[Green Heritage](#) is an approach to heritage sites that values nature (wild, semi-natural and cultivated environments) and seeks to provide a distinctive place for it that improves both human wellbeing and the health of the planet. It involves nurturing or restoring the living element within heritage spaces. It also involves interpretation of these sites via reference to the living world in the broadest sense, both in the past and the present.

While some definitions of heritage include biodiversity (e.g. ICOMOS) we believe the Green Heritage concept embodies a more overt approach to linking the living world and cultural heritage. Green Heritage is a way of thinking; it recognises that we are bound by our responsibility for present and future generations, but also for the legacy and remains of past people, as well as for the living world.

The [Christ Church 'Heritage A to Z'](#) was originally designed as part of our university's celebration of the thirtieth anniversary of the inscription of the Canterbury UNESCO World Heritage Site (WHS). A large part of the University's main campus lies within St Augustine's Abbey, one of the three components of the WHS, which also includes Canterbury Cathedral and the ancient Church of St. Martin's. It remains a site dedicated to celebrating heritage. Each theme has been chosen to represent an aspect of heritage associated with the WHS, or the wider city and its landscape.

See also the [Academy for Sustainable Futures](#) website, the [Bioversity Initiative](#), our [Wilder Campus Map](#) and more on our [Green Heritage](#) initiatives and Sustainability Heritage Working Group.

